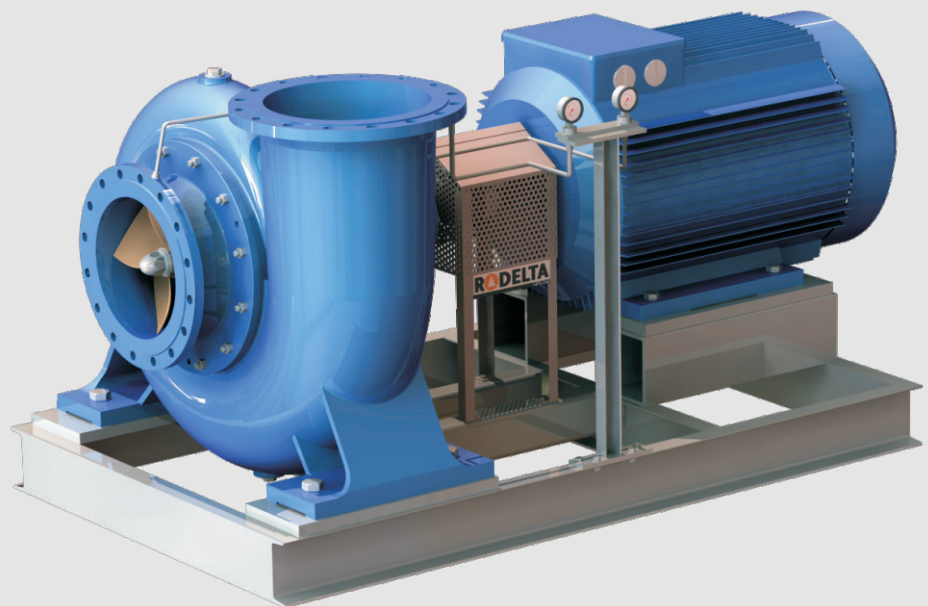




► The power of proven technology

SPP
SPV



Horizontal mixed flow,
Single-stage end-suction pump

General design description

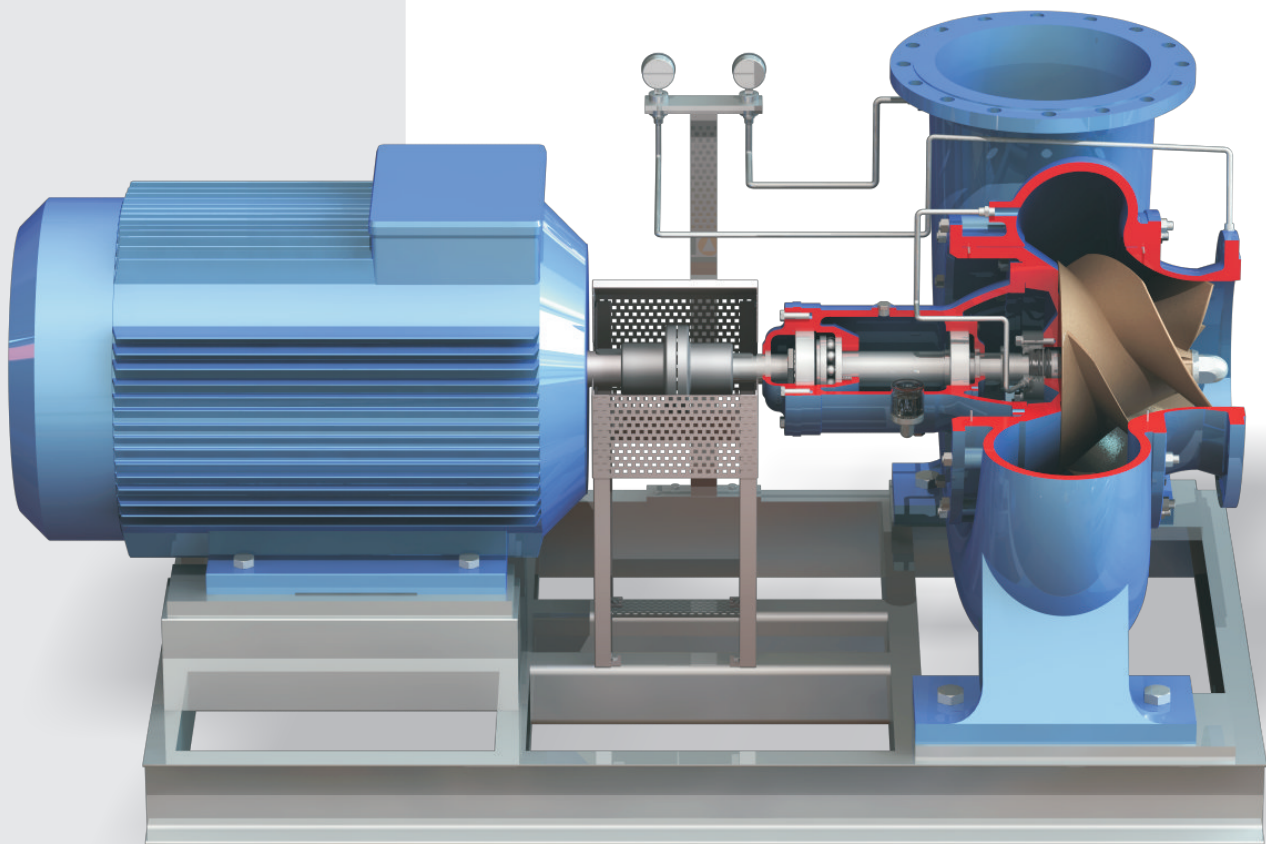
The SPP is a single-stage centrifugal pump suitable for handling pure or contaminated liquids in large quantities.

Capability range

The complete capacity range covers discharges rates up to 5500 m³/h and delivery heads up to 30 m.l.c.

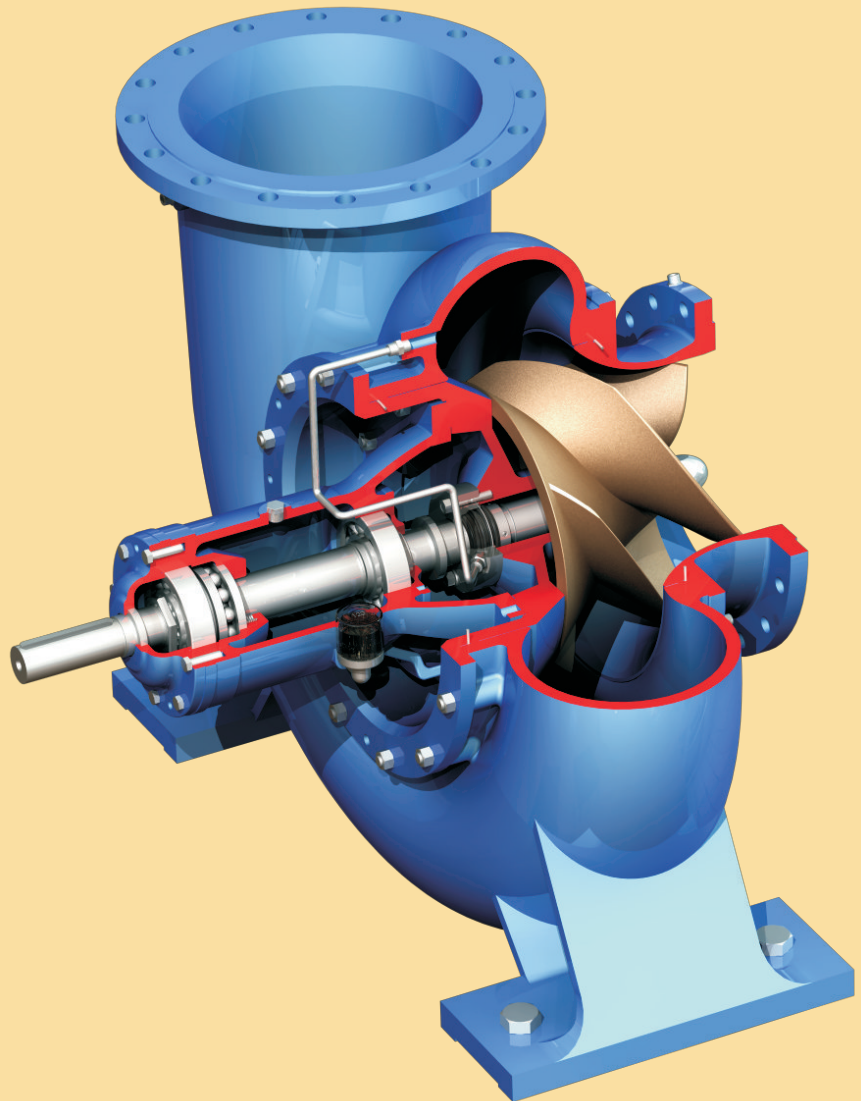
General characteristics

- Favourable energy consumption thanks to the high efficiency
- Practically uniform power requirement over the complete performance range: the pump can therefore operate with closed valves without overloading the drive motor
- Due to the large cross sections minimal risk of clogging
- Robust construction and long working life

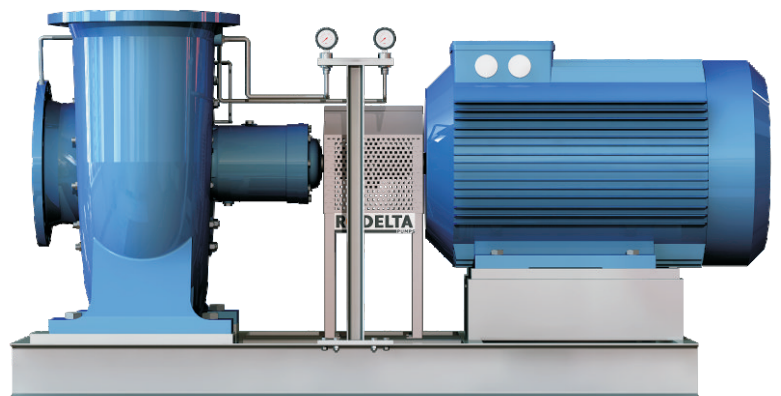
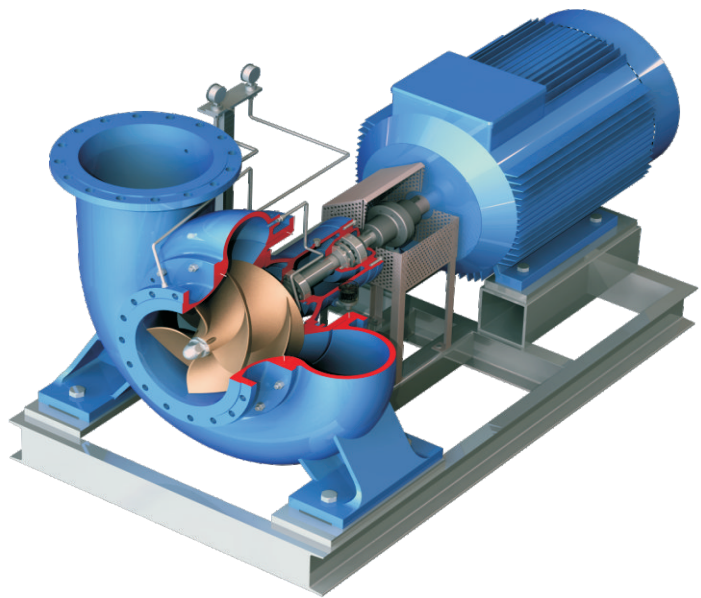


Design

Pump of “pull-out” design, i.e. the pipework does not have to be disconnected for inspection and dismantling of the impeller and shaft seal. The precision-machined pump shaft is seated in amply, oil-lubricated bearings and protected by a shaft sleeve in the stuffing box area. The oil level in the bearing housing is controlled by way of a “constant-level” oiler. The easily accessible stuffing-box with soft packing can also be supplied with a seal ring and a seal liquid. The integrally-cast feet of the casing transmit any forces originating from the pipework directly to the foundation.



This means that the rotor is not subject to any bending and optimal working life of the bearings is assured. The flange dimensions of the tangential, vertical delivery branch and the axial suction branch for the sizes up to and including 35-40 are in accordance with NEN 5802/DIN 2532 (Nominal Pressure NP 10) and the larger pumps according to nominal pressure Np6. Direction of rotation of the pump: clockwise, when viewed from the driven end. Electric motors or combustion engines may be employed for the drive. To facilitate venting of the suction pipe, the pump set can be provided with a complete venting device.



Applications



- Cooling water pumps for condenser systems
- Irrigation pumps for agricultural purposes
- Drainage pumps for water engineering and the building industry
- Flushing water pumps for filter-plants

In short, wherever clean and contaminated liquids have to be transported economically in large quantities and with low delivery heads



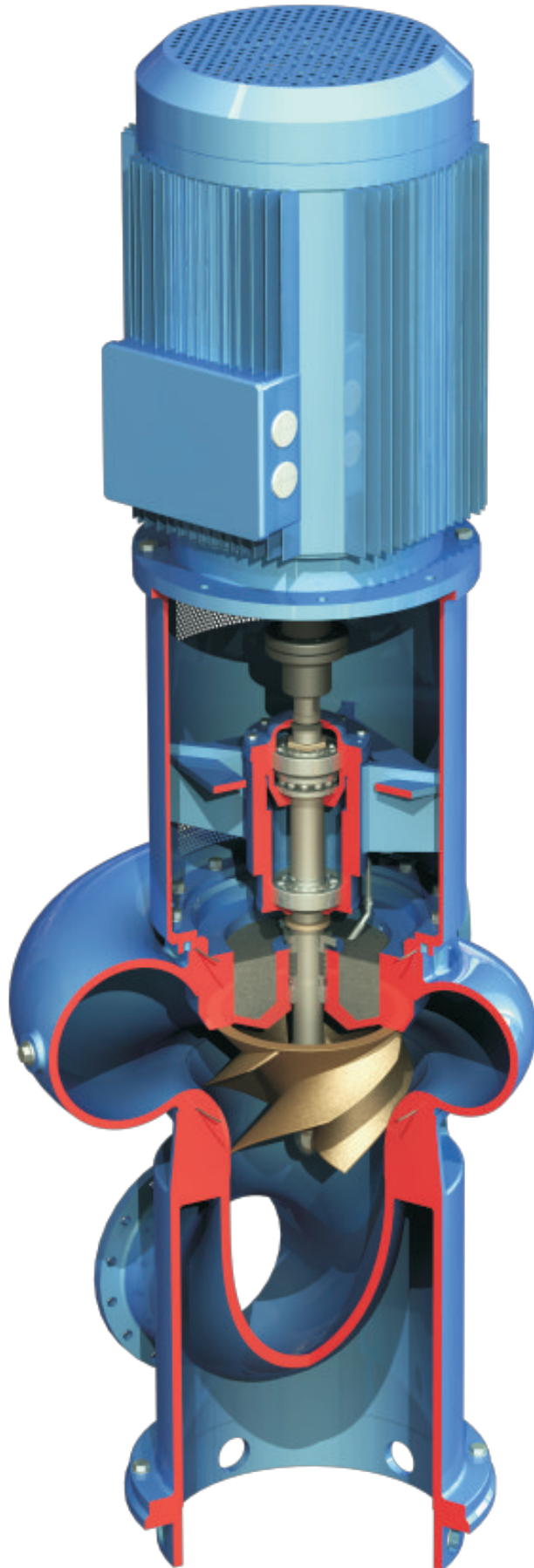
Features and benefits

Vertical design (Type SPV)

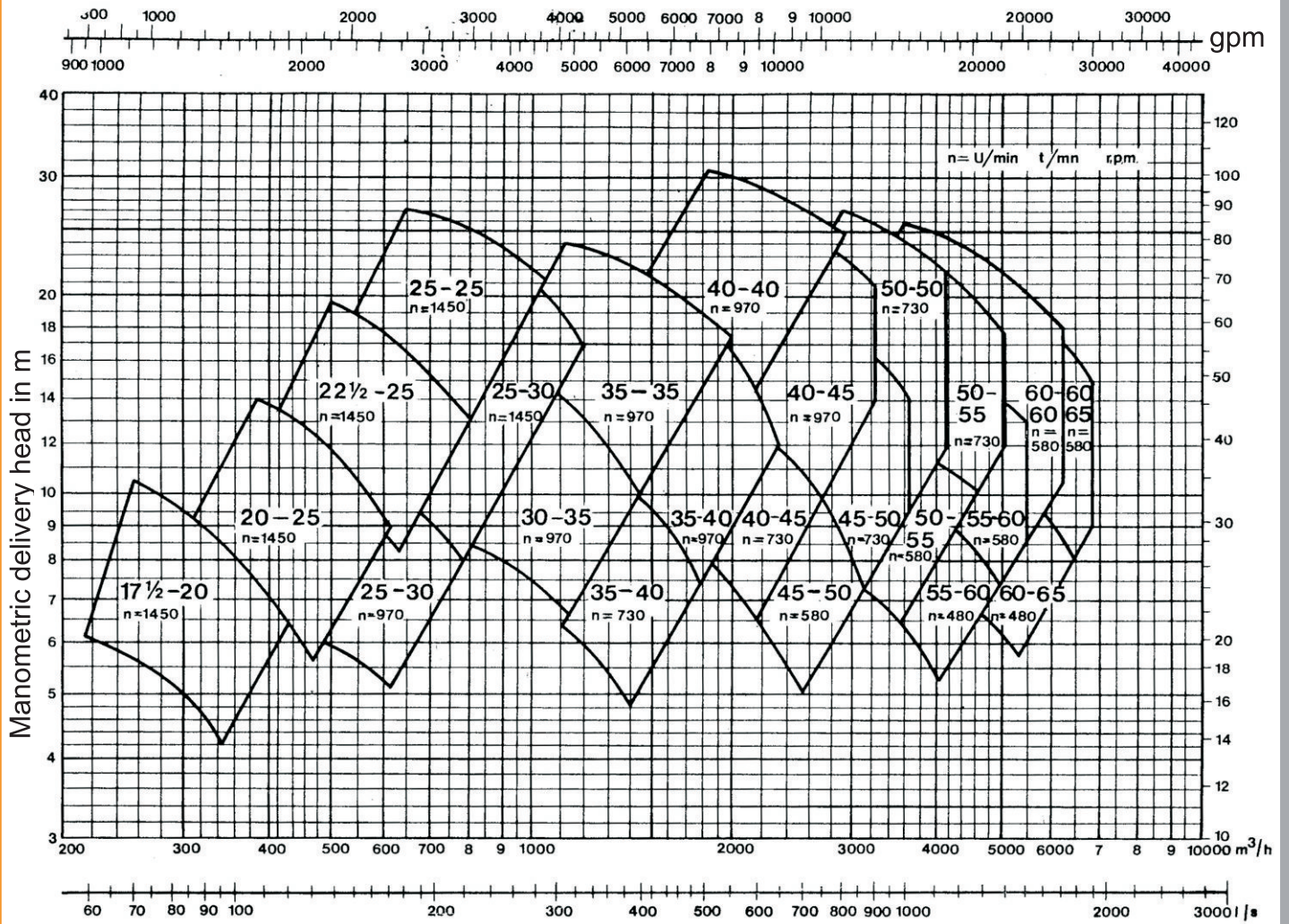
- Pump of “top pull-out” design with the same performance range as the horizontal version
- Modular assembly system with central support or with casing feet. A further vertical version is also available, in which the drive motor is installed in such a way that is separated from the pump and thus protected against any water damage

Materials

Standard version made of grey cast iron, with pump shaft of high quantity steel and shaft sleeve of stainless steel. A bronze impeller is recommended for delivery heads in excess of 12 m. Pumps made of bronze or stainless steel are available for the transport of aggressive media.



Curves



Discharge

Valid for $\gamma = 1\text{kg/litre}$ and viscosity = 1° Engler



Rodelta Pumps International B.V.

- | | |
|-------------------------------|--|
| ▲ Enschedesestraat 234 | ▲ Phone: +31(0)742455200 |
| ▲ 7553 CM Hengelo | ▲ Fax: +31(0)742455201 |
| ▲ PO Box 650, 7550 AR Hengelo | ▲ E-mail: info@rodelta.com |
| ▲ The Netherlands | ▲ Internet: www.rodelta.com |